



NWI COMMERCIAL REAL ESTATE

DIVISION ROAD -VALPARAISO, IN 46383

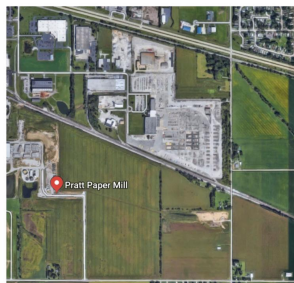
DEVELOPMENT OPPORTUNITY
78 Acres +/-

PROPERTY HIGHLIGHTS
FOR SALE



INDUSTRIAL GROWTH AREA

- **PRICE:** \$4,680,000
- **Parcel ID:** 64-10-32-400-003.000-020
- **LOCATION:** Parcel borders Division Road on the South and Railroad on the North.
- **OVERVIEW:** Parcel is contiguous to the east of the Industrial Development which includes: Pratt Industries, Porter County Correctional Facility and Walsh & Kelly. Utilities can be extended along the utility easement on the south side of railroad
- **USAGE:** Path of growth East of 140 acres Intermodal Terminal Development Industrial



Belinda D Schuster, CCIM

Investment Sales

Lic.# 14041809

219-309-9450

Belinda@nwicre.com



www.nwicre.com

158 S Napoleon Street, Suite 106, Valparaiso, IN 46383



NWI Commercial Real Estate, LLC. No warranty or representation, express or implied, is made to the accuracy or completeness of the information contained herein, and same is submitted subject to errors, omissions, change of price, rental or other conditions, withdrawal without notice, and to any special listing conditions imposed by the property owner(s). As applicable, we make no representation as to the condition of the property (or properties) in question 12/18